

An aerial photograph of a city at sunset. A large bridge spans a river in the foreground. In the middle ground, there is a large stadium with a green field. The city skyline is visible in the background under a warm, orange-hued sky.

ELEVATE

EDUCATION. ECONOMY. EXPERIENCE.

COMMITMENT TO TUSCALOOSA'S FUTURE

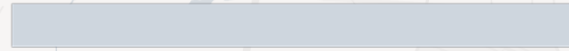
\$500 Million
worth of investments | **30**
years

STRATEGIC INVESTMENTS

Education



Experience



Economy



**Proposed
Initiatives**

**Cultural Arts
& Tourism**

Connectivity

**Parks &
Recreation**

We need your:

- **Imagination**
- **Perspective**
- **Expertise**

ACCOUNTABILITY





THROWING OUT THE GARBAGE (FEES)

Monthly fees will be reduced to \$3.25 beginning Oct. 1 and will be reflected in your Nov. bill



Tuscaloosa News Site – 315 28th Avenue



Concept Rendering – North Elevation (detail)



Concept Rendering – North Elevation



Concept Rendering – South Elevation

PARTNERSHIP OPPORTUNITY

Collaboration among City of Tuscaloosa, Tuscaloosa Public Library, and Children's Hands-On Museum

- 1) Generational project
- 2) Expands learning opportunities across our region
- 3) Creates efficiencies while maintaining core missions
- 4) Timeline is being developed
- 5) Project will be reviewed by Advisory Council when available



Bama Theatre

BAMA THEATRE

Review of subcommittee discussion

- 1) Assessed existing conditions
- 2) Reviewed comparable historic venues
- 3) Discussed theatre schedule and construction timeline
- 4) Agreed to modernize theatre and keep historic aesthetic

BAMA THEATRE

- Projected Cost: TBD
- Funding Sources:
Elevate Tuscaloosa \$3 million
Stakeholders
- Timeline:
Design 2019-2020 by Ellis Architects



Conference Center Concept

CONFERENCE CENTER ATHLETIC AND EVENTS CENTER

Review of subcommittee discussion

- 1) Discussed feasibility study timeline (submittals due Nov. 1)
- 2) Nominated two members to review RFP submissions:

Don Staley

Heather Dill



Tuscaloosa National Airport (TCL)

TUSCALOOSA NATIONAL AIRPORT (TCL)

Review of subcommittee discussion

- 1) Assessed current conditions of runway, TPD hangar, and terminal
- 2) Received updates about commercial air service efforts
- 3) Discussed options to renovate or rebuild the terminal
- 4) Prioritized runway improvements

POLICE DEPARTMENT HANGAR

- Projected Cost: \$1 million
- Funding Sources:
Elevate Tuscaloosa
- Timeline:
Design 2019-2020 by Atkins North America
Construction complete by Fall 2020



Western Riverwalk



Proposed Western Extension (2018 Riverwalk Master Plan Update)

WESTERN RIVERWALK

Review of subcommittee discussion

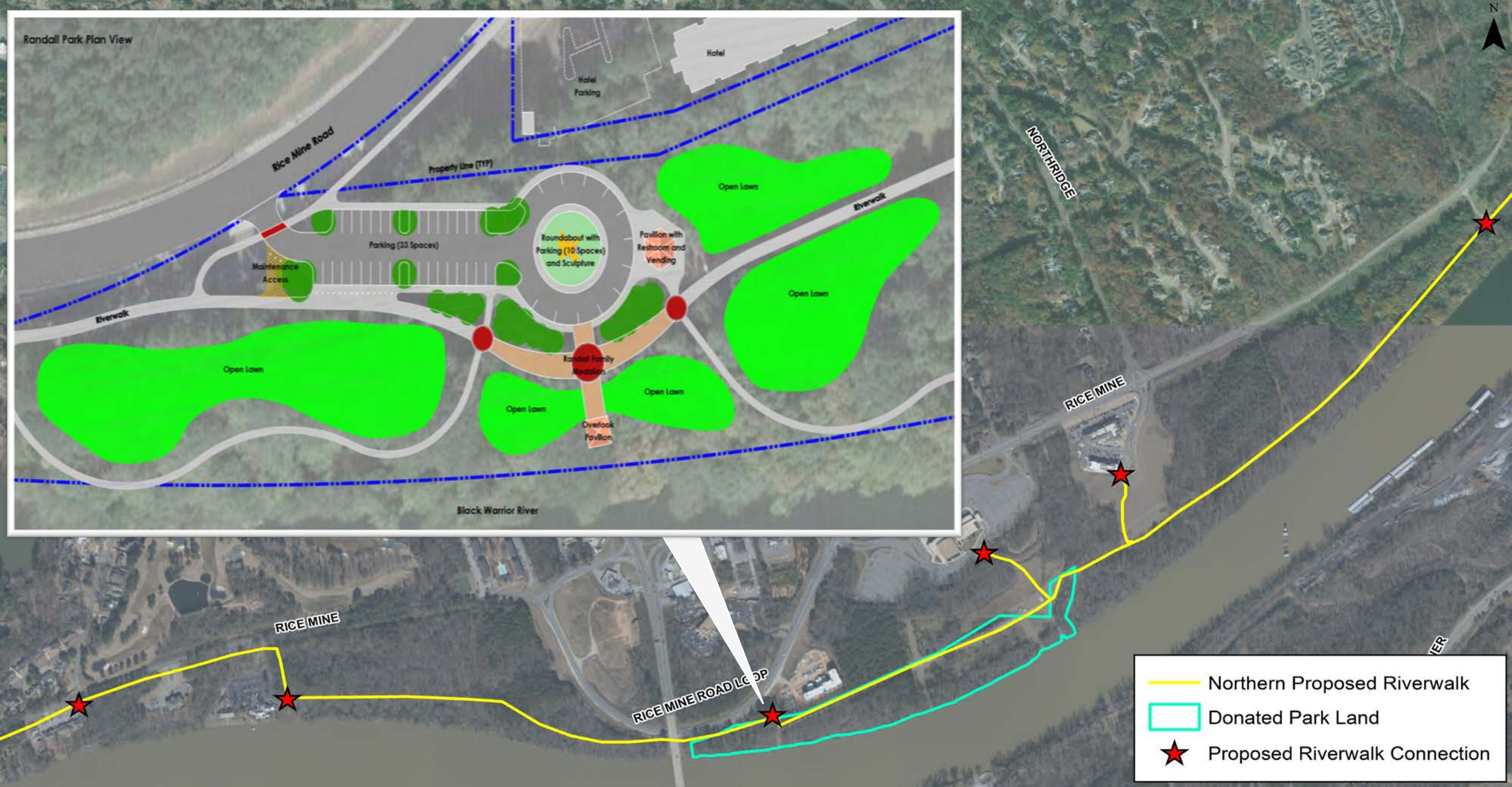
- 1) Reviewed project details
- 2) Received an update on grant funding
- 3) Discussed property acquisition from U.S. Army Corps of Engineers

WESTERN RIVERWALK

- Projected Cost: \$5 million
- Funding Sources:
Elevate Tuscaloosa
Grant Opportunities
- Timeline:
Design 2020 by TTL



Northern Riverwalk



Proposed Northern Phase 1 (2018 Riverwalk Master Plan Update)

NORTHERN RIVERWALK

Review of subcommittee discussion

- 1) Reviewed project details
- 2) Discussed Randall family land donated for park and trailhead

NORTHERN RIVERWALK

- Projected Cost: \$5 million (Phase 1)
- Funding Sources:
Elevate Tuscaloosa
Grant Opportunities
- Timeline:
Design 2020 by McGiffert and Associates



Parking and Transit Authority (PATA)

DOWNTOWN, RIVERFRONT, AND WORKFORCE TRANSIT

Review of subcommittee discussion

- 1) Received an overview of PATA
- 2) Proposed concept of a transit study (80% grant-funded)
- 3) Reviewed examples of transit branding in other cities

DOWNTOWN, RIVERFRONT, AND WORKFORCE TRANSIT

- Projected Investment: \$23 million+ over 10 years
- Funding Sources:
 - Elevate Tuscaloosa (\$18,000 for transit study)
 - Grant Opportunities
- Timeline:
 - Initiate RFP for transit study Fall 2019
 - Implementation 2021-2022 (17-month lead time on buses)

TRANSIT STUDY

**ALDOT
awarded funding
for transit study ***

\$72,000

* \$18,000 match requested



All-Inclusive Playground at Sokol Park

SOKOL PARK

Review of subcommittee discussion

- 1) Received details and phasing of all-inclusive playground
- 2) Discussed public-private partnership opportunity
- 3) Emphasized future fundraising opportunities

SOKOL PARK

All-Inclusive Playground

- Funding Sources:
Elevate Tuscaloosa \$500,000
PARA Foundation
- Timeline:
Phase I 2020 (PARA Foundation)



HARRIS-NICOL WATER RECREATION & TRAILS

A faint, light-colored map of the Harris-Nicol area serves as the background. It shows a network of roads, several bodies of water (lakes and rivers), and some green spaces. The map is oriented with North at the top.

Review of subcommittee discussion

- 1) Received overview of the lakes
- 2) Discussed process for creating and implementing master plan

HARRIS-NICOL WATER RECREATION & TRAILS

- Projected Cost: TBD
- Funding Sources:
 - Elevate Tuscaloosa \$3 million
 - Grant opportunities
 - Stakeholders
- Timeline:
 - Pre-planning 2019-2020 by TTL



Snow Hinton Park

SNOW HINTON PARK

Review of subcommittee discussion

- 1) Received overview of the park
- 2) Reviewed an example of a Georgia park built in phases
- 3) Discussed importance of stakeholder engagement

SNOW HINTON PARK

- Projected Cost:
Master plan: \$50-60,000
Construction: TBD
- Funding Sources:
Elevate Tuscaloosa \$2.3 million
- Timeline:
Master plan 2019-2020 by Barge Design Solutions



McDonald Hughes Community Center

MCDONALD HUGHES COMMUNITY CENTER

Review of subcommittee discussion

- 1) Received overview of the facility
- 2) Reviewed potential renovation cost
- 3) Discussed programming and a vision for the future

MCDONALD HUGHES COMMUNITY CENTER

- Projected Cost: TBD
- Funding Sources:
Elevate Tuscaloosa \$1.4 million for prioritized enhancements
- Timeline:
Improvements 2019-2020 by Ward Scott Architecture

PARKS MASTER PLAN

Long-term vision for parks and community centers:

- McDonald Hughes
- Sokol Park
- Bowers Park
- Phelps Center
- McAbee Senior Center
- Tuscaloosa Tennis Center

Select two subcommittee members to review RFP submittals

A scenic autumn path in Tuscaloosa, Alabama, featuring a wooden fence, colorful foliage, and a dramatic sky. The path is paved and covered with fallen leaves, leading towards a distant horizon. The fence is made of weathered wood and runs along both sides of the path. The trees are in various stages of autumn, with some showing vibrant orange and red leaves, while others are still green. The sky is a deep blue with some white clouds.

Your mission and your commitment is to be
TUSCALOOSA'S VOICE

Engage at
ElevateTuscaloosa.com